

Guess Who

Ready

Did you choose your character?

Yes

No

YOUR TURN

MY TURN

Do you have...???

Colors



Facial characteristics -eyes, nose, hair, bald, mustache, beard, blonde, freckles, etc.

Gender-boy, girl, man, woman

Clothing items-hat, scarf, barrette, earrings, necklaces, glasses

Classifiers-big, little

Memory



Numbers 1-10

Ace

King

Queen

Jack

YOUR TURN



Game Night Vocabulary



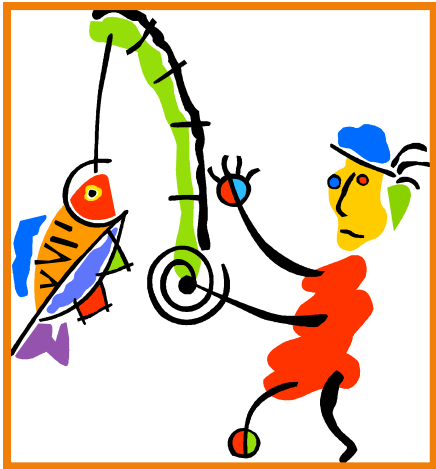
Provided by:

Illinois Service Resource Center

Serving deaf/hard of hearing student behavioral needs
A Technical Assistance Center of the Illinois State Board of Education
3444 W Dundee Rd. Northbrook, IL 60062 www.isrc.us 847.559.8195



Go Fish



Numbers 1-10

**Ace, King,
Queen, Jack**

No, GO FISH

Yes, I have

Do you have

Pair

YOUR TURN

MY TURN

APPLAUSE

BUMMER

UNO

Numbers 1-9

Colors -

red, blue, yellow, green

Skip

Draw (pick) 2

Wild

Draw (pick) 4

Reverse

YOUR TURN

MY TURN



King's Corners

Numbers 1-10

Ace, King, Queen, Jack

Red

Black

Finished/closed

Corner

Move

All

Order highest to lowest

Alternate